



2026-2027 HANDBOOK

TABLE OF CONTENTS

Table of Contents

TABLE OF CONTENTS	2
WELCOME!	4
OVERVIEW	5
MISSION STATEMENT.....	5
MEMBERSHIP	5
PROGRAM	5
ENSEMBLES OVERVIEW	5
ACCEPTANCE TO PROGRAM.....	5
REHEARSALS/PERFORMANCES (OVERVIEW)	6
HEALTH/WELL-BEING.....	6
PRIVATE LESSONS.....	6
STUDENT LEADERSHIP	6
HIERARCHY OF LEADERSHIP	7
ENSEMBLES	8
2026-2027 FEES	12
WINDS AND PERCUSSION.....	12
8TH GRADE WINDS AND PERCUSSION	12
COLOR GUARD	12
ATTENDANCE & GRADING	13
GRADING.....	13
ATTENDANCE	13
<i>Rehearsals</i>	13
<i>Performances/Games</i>	13
<i>Excused and Unexcused Absences</i>	14
EXCUSED ABSENCES FROM OTHER CLASSES	15
OFFICIAL POLICY	15
MAKE UP ASSIGNMENT	16
COMMUNICATION	17
REMIND TEXT MESSAGING SERVICE	17
GENERAL POLICIES AND PROCEDURES	18
DRESS CODE	18
<i>Rehearsals</i>	18
<i>Performance Uniforms</i>	18
LATE ARRIVAL/EARLY DISMISSAL.....	19
HONOR BANDS.....	19
<i>State and District Level Honor Bands</i>	19
<i>College/University Honor Bands</i>	19
GSCS ATHLETIC CONFLICTS.....	19
ISLAND BAND BOOSTERS	20
SUMMER SCHEDULE 2026-2027	21

COLOR GUARD ONLY	21
MARCHING BAND STUDENT LEADERS	21
PERCUSSION ONLY	21
WINDS ONLY.....	21
MARCHING BAND REGISTRATION	21
BAND CAMP	22
2026-2027 BAND CALENDAR	23
FALL SEMESTER.....	23
<i>July</i>	23
<i>August</i>	23
<i>September</i>	23
<i>October</i>	23
<i>November</i>	24
<i>December</i>	24
SPRING SEMESTER.....	24
<i>January</i>	24
<i>February</i>	24
<i>March</i>	24
<i>April</i>	24
GULF SHORES HIGH SCHOOL BAND	25
FIELD TRIP/HEALTH/PROGRAM PERMISSION AND ACKNOWLEDGEMENT FORM.....	25
GULF SHORES HIGH SCHOOL BAND	26
DISCIPLINE EXPECTATION ACKNOWLEDGEMENT.....	26

GULF SHORES

MARCHING BAND

WELCOME!

Dear Band Member and Parent,

We are delighted to welcome you to the Gulf Shores High School Band Program! As directors of the program, we are excited to work with each of you and help you achieve your musical goals.

Our band program is renowned for its excellence and has a strong tradition of musical success. Our program provides a comprehensive music education that includes instrumental technique, music theory, performance, and appreciation.

We encourage every student to participate in the band program, regardless of their experience level. Our experienced staff and dedicated team of student leaders will work with each student to help them grow and develop their musical abilities.

Throughout the year, our band program will provide a range of performance opportunities for our students, including concerts, festivals, and competitions. We believe that these experiences help build confidence, teamwork, and leadership skills that will serve our students well beyond their high school years.

We encourage you to get involved in the band program and take advantage of the many opportunities it provides. If you have any questions, please don't hesitate to reach out to our staff. We look forward to working with you and making great music together!

WILLIAM MIXON

Band Director
Gulf Shores High School
wmixon@gsboe.org

CJ ELLIS

Band Director
Gulf Shores Middle School
cjellis@gsboe.org

LEE STACKS

Band Director
Gulf Shores Middle/High
lstacks@gsboe.org

SAVANNAH HIGGINSON

Color Guard Sponsor
Gulf Shores High School

OVERVIEW

Mission Statement

- To build a program based on PRIDE, EXCELLENCE, FAMILY, & COMMITMENT.
- To help educate, share, and foster the value of music education within our community.
- To develop all students into model citizens so they may be successful in future endeavors.
- To provide ALL students a first-class music education through meaningful performance.
- To work every day towards becoming the best band program.

Membership

- The Gulf Shores Band Program is an organization that provides musical experiences for all students of Gulf Shores High School and Middle School.
- All students are welcome to participate in this activity, provided they pass all audition requirements and prerequisites.
- **Members are required to participate both semesters.** For continued growth as musicians and ensembles, students are **REQUIRED** to be in marching band and a concert band. For Color Guard, students are required to be in color guard each semester. This is integral to the student and program. Chair Placements take place after marching band season in early November. Exceptions are made on a case-by-case basis by the school administration. Also, class scheduling does not allow for schedule changes at the fall/spring semester split.

PROGRAM

Ensembles Overview

- The Band Program provides for all aspects of a well-rounded band program including the “The Gulf Shores High School Marching Band,” Symphonic Band, Percussion Ensemble, Steel Drum Band, and Color Guard.

Acceptance to Program

- Instrument/Percussion band students must have successfully participated in band during middle school. Exceptions to this are made by the band directors on a case-by-case basis.
- Color Guard should successfully audition during April of the preceding school year. Due to the physical demand of the color guard activity, all students may not be accepted.

- Visual ensemble skills shall include fundamental flag technique, fundamental movement technique, and eye/hand/foot coordination.

Rehearsals/Performances (overview)

- Students are also required to attend all scheduled rehearsals and performances.
- **ALL performances are MANDATORY.**
- All members of the marching band will be **required** to attend band camp in the summer before school begins. Additionally, percussion, new marchers, and color guard members will have an additional camp. Any student that has an **unexcused absence** will be dismissed from the program.
- These camps are a week or more in length, and up to 12 hours a day.
- Instructors are hired to give individualized instruction for these camps to facilitate the learning process.
- After-school rehearsals include Tuesday and Thursday until 5:30 p.m. for the full band. Habitual absences will prevent you from performing – regardless of being excused or not.
- Full Percussion (Drumline and Front Ensemble) rehearse on Monday from 3:30-4:30.
- Fall performances include all football games, parades, pep rallies, concerts, and other performances scheduled.
- Spring instrumental ensembles include a minimal amount of after school rehearsals.
- Performances include the state concert band assessment (MPA) and the spring concert, as well as Mardi Gras parades and other concerts.

Health/Well-Being

- All members of the Gulf Shores High School Band are expected to be in good physical condition. They understand that this is a physically demanding activity, and that proper health must be maintained. Marching Band activities will include physical conditioning and exercise, as it is a PE credit earning activity.
- All members are expected to drink the appropriate amount of water each day and maintain a healthy diet. Students are expected to eat healthy meals before all rehearsals and performances. Students must bring their own, personal water jug to all rehearsals and performances so that they can stay properly hydrated.
- All members are expected to wear appropriate clothing fit for outdoor activities during rehearsals or performances when a uniform is not mandated.

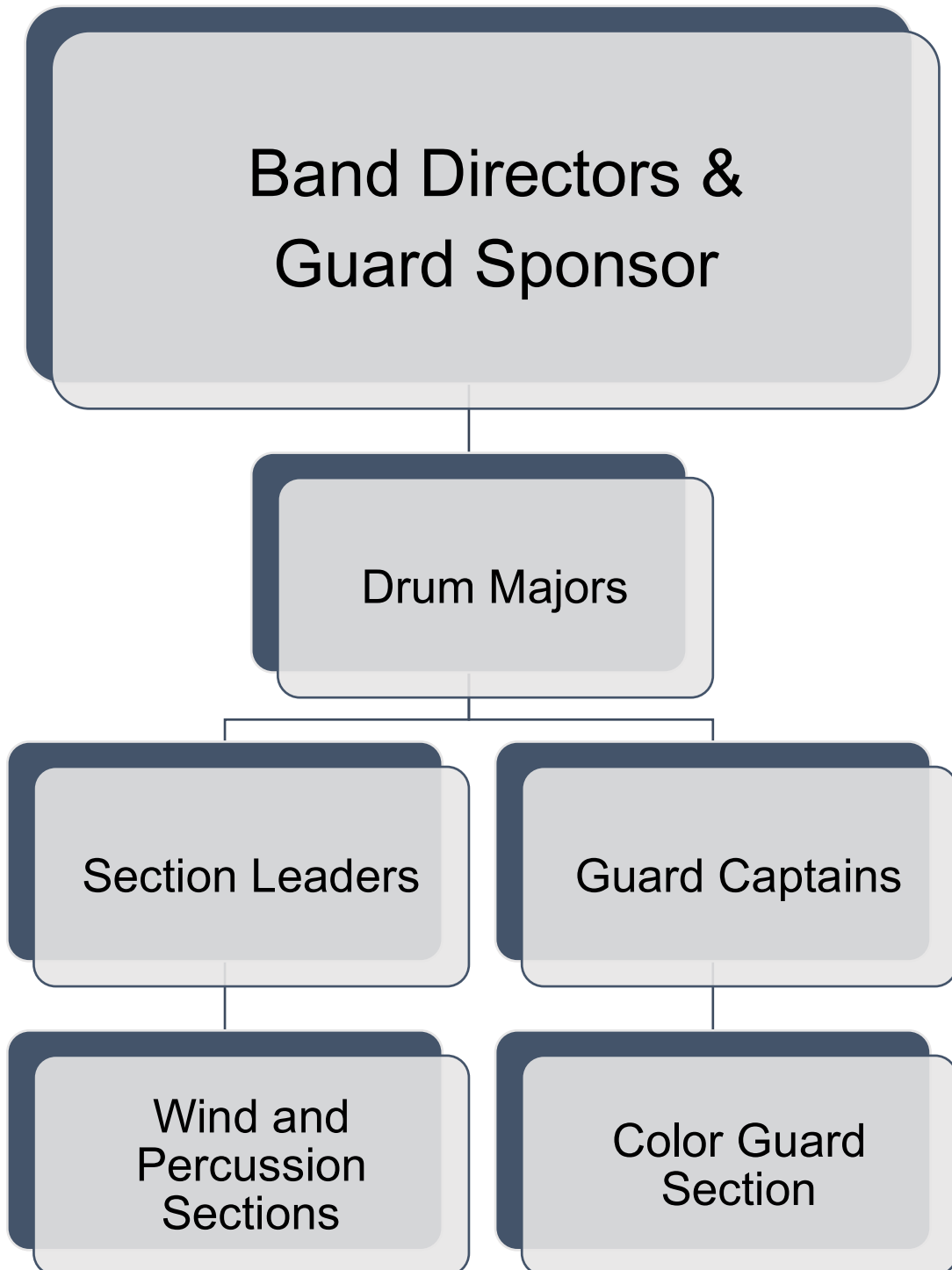
Private Lessons

- Private Lessons are not required but are ultimately the best way to get better on your instrument. Students make incredible progress when they study privately with an instructor.
- If a student is interested in Private Lessons, please see our website for a compiled list of local instructors or ask Mr. Mixon or Mr. Ellis for further information.

Student Leadership

- Band Leadership is made up of appointed and audition-based positions. Each student must apply and interview. Drum Majors must audition.
- Appointed officers include section leaders and color guard captains.
- Drum Major is an auditioned position and will be responsible for the conducting duties of the marching band, representing the band at competitions, visiting other bands, and meeting regularly with the other leadership staff to discuss the operations of the band program.

HIERARCHY OF LEADERSHIP



ENSEMBLES

Gulf Shores High School Marching Band

The Gulf Shores High School Marching Band is a source of pride for both the school and the community. Comprised of students in grades 9-12, the band has a long history of excellence in music and performance. Under the direction of William Mixon and CJ Ellis, the Gulf Shores High School Marching Band has won numerous awards and accolades over the years, including multiple first-place finishes at marching band competitions. The band's dedication to excellence and teamwork is evident in their performances, which are marked by precision, energy, and enthusiasm.

The band's practice schedule is rigorous, with students rehearsing multiple times a week both during and after school. This commitment to practice and preparation is crucial to the band's success, as it allows them to master complex musical arrangements and choreographed drill



designs. With over 100 members, the band takes over the field, performing intricate marching and musical routines that leave the crowd cheering for more. Regardless of their show, they never fail to deliver an exciting experience. In addition to football games, the Gulf Shores High School Marching Band performs at numerous community events throughout the year, including parades, concerts, and festivals. Their dedication to community outreach and involvement is one of the many reasons the band is so highly regarded in the Gulf Shores area.

The band is a tight-knit community of students who share a love of music and a dedication to their craft. Through their hard work and collaboration, they have built a sense of camaraderie and belonging that extends far beyond the football field or concert stage. For many students, the Gulf Shores High School Marching Band is more than just an extracurricular activity. It is a place where they can be themselves, learn new skills, and make lifelong friends. The band's emphasis on teamwork, discipline, and dedication instills valuable life lessons that extend far beyond the realm of music. As a result, the Gulf Shores High School Marching Band has had a profound impact on the lives of countless students over the years. Many former members credit their experience in the band with giving them the skills and confidence they needed to succeed in college, career, and life.



ENSEMBLES CONTINUED

Symphonic Band



The Gulf Shores High School Symphonic Band is a group of student musicians who perform a wide variety of music at school events, competitions, and concerts. The band is made up of woodwind, brass, and percussion instruments, and is comprised of students who have demonstrated musical proficiency and dedication to their craft. Under the direction of Mr. Mixon, the Gulf Shores High School Symphonic Band has developed a reputation for excellence. The group regularly competes in statewide and regional festivals and has earned numerous awards and recognitions for their performances.

The Symphonic Band's repertoire includes classical and contemporary music, pop, and other genres, providing students with a broad range of musical experiences and opportunities to develop their skills. In addition to regular rehearsals, members of the Symphonic Band often participate in small ensemble groups, music camps, and other activities to further enhance their musical abilities.



Overall, the Gulf Shores High School Symphonic Band is a dedicated and talented group of student musicians who contribute to the school's vibrant arts culture and provide the community with exceptional musical performances, from classical works to modern pieces and may include marches, overtures, symphonies, and popular music. Participating in a high school symphonic band provides a valuable musical and social experiences for students.



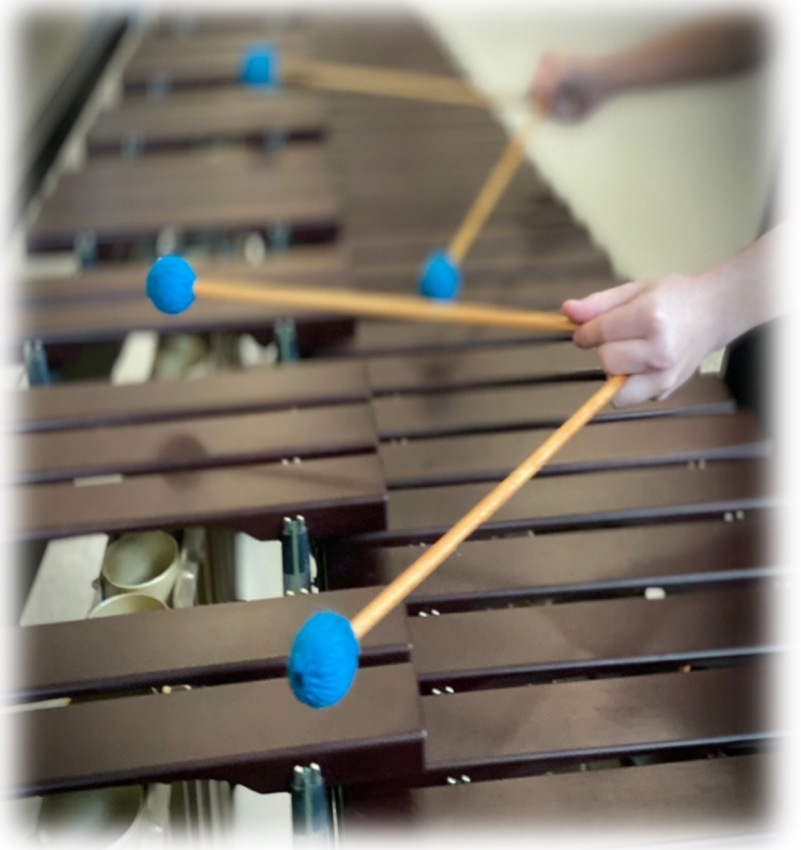
ENSEMBLES CONTINUED

Percussion Ensemble

Our percussion ensemble is a musical group that focuses on percussion instruments such as drums, mallets, and auxiliary percussion. In percussion ensemble, students work collaboratively to create intricate and dynamic rhythmic patterns, often using a combination of traditional and non-traditional instruments. The ensemble performs a variety of musical styles, including classical,



jazz, and contemporary music, and may also incorporate electronic elements into their performances. The percussion ensemble is comprised of all percussionists in the 9th-12th grade. The Percussion Ensemble meets during the fall and spring, during school and after school. Percussion members are also required to participate in Mardi Gras parades and other full band functions requiring a percussion ensemble. The steel drum band is made up of students already in the percussion ensemble. Additional students may participate on a case-by-case basis as schedules allow. The steel drum band rehearses during the percussion class.



ENSEMBLES CONTINUED

Color Guard Ensemble



The Gulf Shores High School Color Guard is a group of students who perform with the school's marching band. Color guard members use flags and dance to interpret the music played by the band, adding a visual element to the overall performance. The guard is known for its energetic and creative performances. The group participates in competitions, parades, and other events throughout the year, showcasing their skills and talents.

To become a member of the Gulf Shores High School Color Guard, students typically audition during the

summer or early fall. Previous experience in dance or color guard is usually helpful, but not required.

Students must be committed to attending rehearsals, performances, and other events throughout the year. Overall, the Gulf Shores High School Color Guard is a talented and dedicated group of students who work hard to provide meaningful musical and visual experiences alongside the rest of the marching band.



2026-2027 FEES

Winds and Percussion

- \$300.00 - Includes all band activities for the entire year.
- What does your Regular Band obligation pay for? – All regular season travel, uniform rental, upkeep and cleaning, basic equipment and facility usage, music, and all instruction.
- Does not include personal items listed below and food items
 - Tuxedo and concert dress for concert season (for new students)
 - Band shoes \$35 (for new students or if replacements are needed)
 - Reeds, and other accessories

8th Grade Winds and Percussion

- \$200.00 - Includes all band activities for the marching band season.
- What does your Regular Band obligation pay for? – All regular season travel, uniform rental, upkeep and cleaning, basic equipment and facility usage, music, and all instruction.
- Does not include personal items listed below and food items
 - Tuxedo and concert dress for concert season (for new students)
 - Band shoes \$35 (for new students or if replacements are needed)
 - Reeds and other accessories

Color Guard

- \$200.00 - Includes all fall guard activities for the entire year
- What does your Regular Guard obligation pay for? – All travel, equipment usage and upkeep, music, materials, and all instruction.
- \$530.00 - Extra Guard Apparel/Equipment

Fall Uniform	\$250	Guard Shoes	\$40
Jacket	\$70	Bag	\$50
Make Up	\$30	Rifle Prop	\$60
Pom-Poms	\$30		

- Extra Guard equipment and apparel are used from year to year and only needs to be purchased once.

All band fees must be paid by Marching Band registration on Sunday, July 12th.

*****Any balance from a previous year will roll over into the following year.*****

ATTENDANCE & GRADING

Grading

- Summative Assessment 60% – All Performances, contests, and special events.
- Formative Assessment 40% – Class Participation, After School Rehearsals, Etc.
- All events are graded. Band is primarily a performance-based class.
- Within each category (Formative/Summative), each individual event/assignment is worth a certain number of points.

Attendance

Attendance for EVERY event is required for EVERY student. Having all students in attendance is crucial to the band's success. When a student misses, it has a negative impact on every other performer around them and, ultimately, limits the band's success. Not being in attendance hurts the band and habitual absences will result in disciplinary action.

Rehearsals

- Every rehearsal is required for every student. See below for consequences for missing various rehearsals. The dates for every rehearsal/performance are sent out in April. This is plenty of time to plan appointments, family visits, etc. Numerous unexcused absences will result in extended disciplinary action and could include dismissal from the program.
 - After School Rehearsals
 - Reduction in class grade (for High School Students)
 - No halftime performance on Friday Night/Competition
 - Students often learn new elements to the show on Tues/Thurs and perform them on Friday. Students with unexcused absences are not permitted to perform with the band for the current week's halftime. However, they must attend the game or lose additional points.
 - Students with an excused absence may complete an in-class writing assignment to make up the class grade.
 - More than 4 unexcused absences from practices will result in a probation suspension of at least 2 weeks.
 - Band Camp
 - Missing more than 6 rehearsal blocks will result in dismissal from the program. We learn approximately 60% of the show during this time and students cannot be successful if they are not there.
 - Summer 6-9 Rehearsals (Between Band Camp and Start of School)

Performances/Games

- Every performance is required for every student. See below for consequences for unexcused absences. The dates for every rehearsal/performance are sent out in April. This is plenty of time to plan appointments, family visits, etc. Numerous unexcused absences will result in extended disciplinary action and could include dismissal from the program.
 - Football Games
 - Reduction in class grade (for High School Students).
 - No performance at halftime of the next game.
 - More than 2 unexcused absences will result in a probation suspension of at least 2 weeks.
 - Community Pep Rallies/Parades
 - Reduction in class grade (for High School Students).
 - Competitions
 - Reduction in class grade (for High School Students).
 - Probation suspension for at least 3 weeks.

Excused and Unexcused Absences

- Excused Absences are absences that fall under the Gulf Shores City Schools absence policy as well as any extenuating circumstances with PRIOR approval from a director or sponsor.
- Unexcused Absences are absences that are not excused through the above policy.
 - This includes birthday parties, family trips, visiting with out-of-town guests, etc.

*** Multiple EXCUSED absences could lead to your removal from an ensemble. ***



EXCUSED ABSENCES FROM OTHER CLASSES

Below is the official make up work/test policy of Gulf Shores High School. This policy is in place for the Make Up Assignment for missing a band event as well as if a student misses work for another class due to a band event.

Please note, if a student misses another class for a band event, they are permitted, at the director's discretion, to use band time to make up work. However, band time may not be used to make up work for other non-band related absences, excused or not.

Official Policy

"Makeup work/tests will be administered to students whose absences were due to reasons coded as "excused" according to policy. Students will have a maximum 3 days upon return to school to complete makeup work. It is the student's responsibility to see the teacher to discuss arrangements for makeup tests. If a student has an excused absence prior to a test, the student should be given time to get materials missed before taking the test."



MAKE UP ASSIGNMENT

As per the school policy, students with an excused absence on the day of a rehearsal or performance may be permitted to submit a makeup assignment. Select an essay prompt from the below list. You are to write a 2 page (front and back) handwritten essay addressing your selected prompt. You have three school days from the day of your excused absence to submit this essay to Mr. Mixon. (Example: If you were absent for three days, your three-day timeline would begin from your last absence.) After those three days have expired, the paper may not be submitted.

Prompts:

1. What is a leader, and how do you become an influential leader?
2. While not a sport, the band is a team activity. How and why is the individual important for the success of the team?
3. Write about a historical figure who was a great leader. What made him or her so influential?
4. Write about someone in your life who is a great leader. How does he or she inspire you?
5. What is your idea of a good person? How can individuals strive to be good people daily?

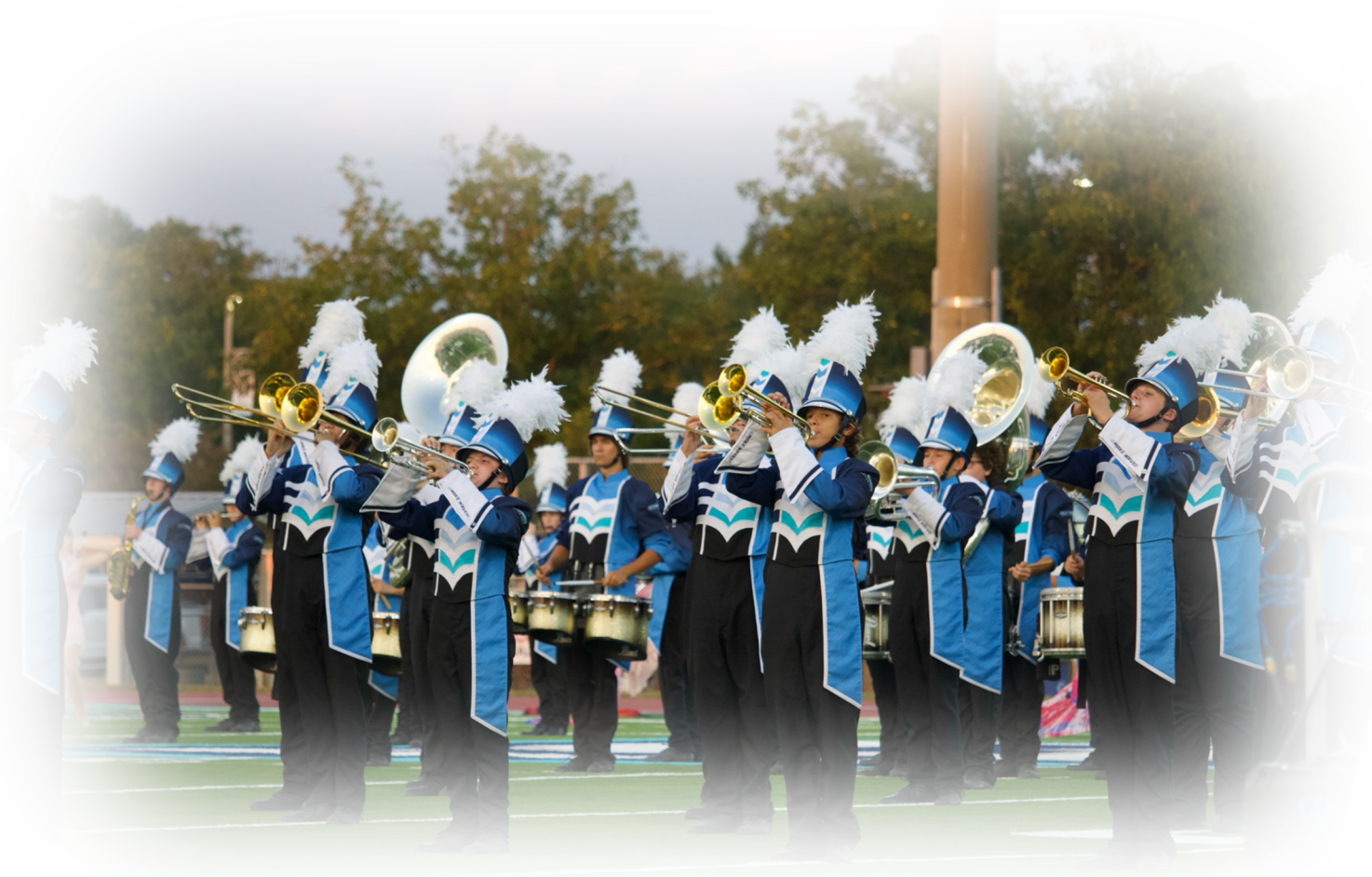
COMMUNICATION

Remind Text Messaging Service

Our primary form of communication with the band family is through remind text messages. This is a simple, easy-to-use, service that is at no additional cost to you. Please sign up according to your section listed below.

For all sections, text the below code to **81010**.

- 8th Grade - @26GSMB-8
- Winds - @26GSMB-W
- Color Guard - @26GSMB-CG
- Percussion - @26GSMB-P
- Section Leaders - @26GSMB-SL



GENERAL POLICIES AND PROCEDURES

Dress Code

A dress code is important for a marching band as it promotes unity, professionalism, and a sense of identity among the members. It ensures that all members are appropriately dressed and presentable for performances, reflecting positively on the reputation and image of the organization they represent. Additionally, a dress code helps maintain discipline and prevents conflicts or confusion, as all members are aware of what is expected of them in terms of attire and appearance. Please review the below outlines:

Rehearsals

Students must adhere to the Gulf Shores City Schools Dress Code. Please refer to the school's website for more information. Below are some rehearsal-specific guidelines students must follow:

- Shoes
 - Students must wear closed toe shoes. NO Flip-Flops, Slides, Sandals, etc. Incorrect footwear can result in injury for the performers. If a student is wearing incorrect footwear, they will have to wear marching shoes and will have a grade reduction.
- Other Clothing
 - It is HOT! Please wear appropriate clothing so that you stay safe. Jeans/sweatpants and jackets are not advised during the hotter months.

Performance Uniforms

During performances, every student is required to wear a specific uniform. The purpose of wearing uniforms is so that every performer is UNIFORM. Not following the uniform guidelines can result in not participating in that performance.

- Casual Uniform
 - Instrumentalists:
 - Black Performance T-Shirt of CURRENT year; Khaki Shorts; Closed Toe Shoes
 - Color Guard:
 - Refer to Color Guard Handbook
- Marching Band Uniform
 - Instrumentalists:
 - Black Band T-Shirt, Gym Shorts, Long Black Socks, Black Marching Shoes, Black Bibbers, Uniform Jacket, Gauntlets, Shako with wrap, Plume, White Marching Gloves
 - If hair touches the collar, it must be up. Pony-tail, bun, braids, etc. are all acceptable.
 - Cold Weather
 - When the weather is below 60 degrees, students may wear layers below their uniform if they wish. Below are some guidelines/suggestions:
 - Layers cannot show outside of the uniform. No hoods sticking out, pants legs showing, etc.
 - In very cold scenarios, students may wear a dark/neutral color beanie (no logos)
 - Concert Uniform
 - Tuxedo: Black Tux Pants, Tux Shirt, Tux Jacket, Bow Tie, Cummerbund, Black Socks, Black Shoes
 - Concert Dress
 - Color Guard
 - Refer to the Color Guard Handbook

Late Arrival/Early Dismissal

Students are not allowed to arrive late or leave early from required band events. This includes football games. Students may not leave after halftime.

Honor Bands

Honor Bands are privately hosted events where students attend rehearsals, learn a concert program, and present a concert in a matter of a few days. These are excellent opportunities for students to improve; however, certain rules and procedures apply.

State and District Level Honor Bands

- The Alabama Bandmasters Association hosts two state level band festivals. Both of these festivals are competitive and acceptance is based on an individual playing audition. This audition takes place in January. From this audition, students may be accepted into the District Honor Band or the All-State band.
 - If accepted to either of these groups, the honor band will constitute a school event.

College/University Honor Bands

- Various colleges and universities host honor bands. They are used as recruitment tools to draw students to campus and show them what the school has to offer.
- Acceptance to these honor bands is based on a recommendation from the band director.
- These honor bands are not school events and permission to be excused from school to attend should be made prior to the event through the front office. The band directors do not have the ability to excuse the absence.
- Students will not be recommended for acceptance to an honor band that conflicts with school band events.

GSCS Athletic Conflicts

We are proud to have many students highly involved with both band and various athletic organizations within Gulf Shores City Schools. The band staff, alongside the athletic director and team coaches, work proactively to resolve conflicts before they exist. However, there are times when athletic and band events will conflict. In these cases, please refer to the below policies.

- Performances and Games/Matches are priority.
 - Students should not miss a band performance for an athletic practice.
 - Students should not miss an athletic competition for a band practice.
- If a performance is occurring the same time as a game/match, the band staff and coaching staff will work to resolve the conflict. This decision is made by the band staff and athletic department staff and should be followed by the student.
 - This may involve arriving late to the performance/game, missing the performance/game, or some other option.
- It is the student's responsibility to communicate band commitments to their coach as well as communicating athletic responsibilities to the band staff.
 - This should be done as soon as schedules are available and as far in advance as possible.

ISLAND BAND BOOSTERS

All parents/legal guardians who have children in the Gulf Shores City Bands are automatic members of the Island Band Boosters. The primary purpose of the Boosters is to provide moral and financial support to the bands.

The financial support is used to provide items that are outside of the normal band budget, such as the use of charter busses, MPA clinicians, student band shirts, gift bags, snacks, etc.

The moral support is provided by volunteering time to help with band activities, such as putting together gift bags, working at the annual summer camp, etc. Another way to provide moral support is by contacting members of the community to assist with the cost of providing meals and snacks to the students during different events.

The Boosters are led by an elected Board of Directors who have a current student in band. Any member may request to be elected to the Board of Directors. The Boosters have several meetings a year to discuss current band activities and objectives. All parents/legal guardians are welcome and encouraged to attend the meetings and make suggestions that will then be voted on by the Board of Directors.

The primary methods of communication about Booster meetings and activities are Sign Up Genius emails, Remind and Facebook.

SUMMER SCHEDULE 2026-2027

COLOR GUARD ONLY

July 6-10 (Guard Camp)

Practice from 9:00PM – 1:00PM in the HIGH SCHOOL BANDROOM
Required for all color guard (new and returning)

MARCHING BAND STUDENT LEADERS

July 8-10

Leadership Clinic in the Band Room from 1:00PM – 4:00PM. You will need your instrument and marching band music.
Required for all Section Leaders, Guard Captains, Drum Majors

PERCUSSION ONLY

July 13-17 (Percussion Camp)

Practice from 9:00PM – 1:00PM in the HIGH SCHOOL BANDROOM
Required for all percussion (Drumline & Front Ensemble)

WINDS ONLY

July 13-17 (Winds Fundamental Camp)

Practice from 9:00PM – 1:00PM in the HIGH SCHOOL BANDROOM
Required for all Brass and Woodwinds

MARCHING BAND REGISTRATION

Sunday July 12 – 4:00PM – 8:00PM

This registration time is a window for you to come and purchase any marching band supplies you need. This includes shoes, flip folders, flip folder pages, reeds, etc. It is preferred to pre-order your supplies using the online form that will be sent out over the summer. Simply bring your payment and pick up your pre-assembled supply bag.

Last Name: A-M 4:00-6:00PM N-Z 6:00-8:00PM

Please be prepared to pay your band fee of \$300 (\$200 for Guard and 8th Graders) at this time.

Please arrive during your specified time to prevent long lines. This is also a great time to visit with our student leaders, staff, and band directors!

BAND CAMP

JULY 20th-24th

Full Band Camp for All Band Members

Daily Itinerary

- Monday through Friday **1:00PM – 9:00PM**
- Band Camp will take place on the GSHS and GSMS campuses.

Meals

- Students are not allowed to leave while band camp is in session. Dinner will be provided each day at no cost to students.
- A daily menu will be provided prior to camp.
- Students may bring their own meals if preferred, however meal drop offs are discouraged.

Additional Practice Prior to School Beginning

- July 27-29 5:00PM-9:00PM
- Same Health Precautions should be taken as for Band Camp Week (shoes, bug spray, water, etc.)
- Once school begins, the band has practice every Tuesday and Thursday from 3:30-5:30. Additionally, percussion (drumline and front ensemble) will practice on Monday from 3:30-4:30.

2026-2027 BAND CALENDAR

Fall Semester

July

Day	Event	Time	Location
6-10	Color Guard Camp	9:00AM-1:00PM	HS Bandroom
8-10	Leadership Camp	1:00PM-4:00PM	HS Bandroom
12	Marching Band Registration	4:00PM-8:00PM	HS Bandroom
13-17	Percussion Camp	9:00AM-1:00PM	HS Bandroom
13-17	Winds Camp	9:00AM-1:00PM	HS Bandroom
20-24	Band Camp	1:00PM-9:00PM	HS Bandroom
27	Evening Practice	5:00PM-9:00PM	HS Bandroom
28	Evening Practice	5:00PM-9:00PM	HS Bandroom
29	Evening Practice	5:00PM-9:00PM	HS Bandroom

August

Day	Event	Time	Location
21	GSHS v. Parklane Academy	7:00PM	Home
28	GSHS v. St. Pauls	7:00PM	Home

September

Day	Event	Time	Location
4	GSHS v. Saraland	7:00PM	Away
11	GSHS v. Blount	7:00PM	Home
18	GSHS v. Murphy	7:00PM	Away
25	OPEN	OPEN	OPEN

October

Day	Event	Time	Location
2	GSHS v. Baldwin County	7:00PM	Away
3	Marching Competition	All Day	Foley, AL
9	GSHS v. Elberta	7:00PM	Home
8-11	Shrimp Festival (Band Working)	All Day	Gulf Shores
16	GSHS v. Spanish Fort	7:00PM	Away
17	Marching Competition	All Day	TBD
23	GSHS v. Theodore	7:00PM	Home
24	Marching Competition	All Day	Daphne AL
30	GSHS v. Bayside Academy (SENIOR NIGHT)	7:00PM	Home

November

Day	Event	Time	Location
6	Playoff Round 1	7:00PM	TBD
13	Playoff Round 2	7:00PM	TBD
20	Playoff Round 3	7:00PM	TBD
27	Playoff Round 4	7:00PM	TBD

December

Day	Event	Time	Location
TBD	State Championship	TBD	TBD
TBD	High School Band Concert	7:00PM	Performing Arts Center
TBD	Middle School Band Concert	6:00PM	Performing Arts Center

Spring Semester

January

Day	Event	Time	Location
16	All State Auditions	All Day	Robertsdale High School

February

Day	Event	Time	Location
9	Gulf Shores Mardi Gras Parade	10:00AM	Gulf Shores
TBD	Pre MPA Concert	7:00PM	Performing Arts Center

March

Day	Event	Time	Location
1-5	Music Performance Assessment	All Day	Baker High School
18-19	District Honor Band	All Day	Gulf Shores High School

April

Day	Event	Time	Location
21-24	All State Festival	All Day	Huntsville, AL
13-17	Spring Break	All Day	Everywhere
TBD	High School Band Concert	7:00PM	Performing Arts Center

GULF SHORES HIGH SCHOOL BAND

Field Trip/Health/Program Permission and Acknowledgement Form

2026-2027 School Year

To Whom It May Concern:

I understand that my child, _____, will be a participant in the Gulf Shores High School/Middle School Band for the 2026-2027 academic school year. I hereby grant permission for my child to attend all events in which the band will participate, including but not limited to, out of town football games and competitions, field trips, etc. To reduce liability, I understand that I must submit this permission form (signed and dated).

I understand that if the school does not furnish transportation to an event, the school may allow parents to transport students to the event with pre-approval from the principal. In this case, copies of the parent's driver's license driving to the event and copies of the proof of insurance for the vehicle being used to the event will be kept on file in the school office. For a parent to transport their child or another child (not their child) to any band event, prior approval from the parent and principal is required. My signature below is my approval for my child to ride with a parent in such a circumstance.

I understand that **band is a full year commitment and schedules are not changed for the spring semester.**

I understand that **band events (both inside and outside of school hours) are part of a class and assigned grades based on attendance and participation.**

I understand that **band events may not be missed for other band events not associated with Gulf Shores City Schools (honor bands, etc).**

I have read and understood all policies and procedures established in the Gulf Shores Band Handbook.

I understand each trip will be chaperoned by Gulf Shores Band parents and/or other adults. In the event of an accident, I grant the chaperone the authority to give a physician permission to administer medical aid to my child. Any special health need and/or allergies the teacher should be aware of are listed below: I understand that I shall contact the band director in writing should any of the above circumstances change. Any important health issues are listed below. I also agree to report any of these issues directly to the school nurse.

Parent Name (Print)	Parent Signature
Parent Cell Phone Number	Emergency Contact Information

GULF SHORES HIGH SCHOOL BAND

Discipline Expectation Acknowledgement

2026-2027 School Year

Being a member of the Gulf Shores Band Program is a privilege. Part of the responsibility associated with being a member is upholding the image of the largest organization in our school system. As such, students that are part of repeated disciplinary action placed into effect by the school system's administration or band directors are subject to removal from the band program.

Egregious violations regarding attitude, contraband, and violence will not be tolerated and will prompt review of continued participation by the band directors and school administration.

If a student is removed from band due to this disciplinary policy, any fees paid are nonrefundable. Additionally, removal from the program does not remove the student from the class. Students removed will be required to complete in-school assignments on a weekly basis to fulfill the grade aspect of the class. If assignments are not completed, the student's grade will adjusted appropriately.

Signatures

By my signature below, I understand that my student, _____, is subject to the disciplinary policy set forth in this acknowledgement. As such I understand that my student's actions may be cause for removal from the program and forfeiture of any/all band fees that have been paid.

Student Name (Print)	Student Signature
Parent Name (Print)	Parent Signature